

273/1

**GEOGRAPHY**

**PAPER 1**

**JULY/AUG 2024**

**2hrs 45 minutes**

**ASSHU ANKOLE MOCK EXAMINATION 2024**

**Uganda Certificate of Education**

**GEOGRAPHY**

**PAPER 1**

**2hrs 45 minutes**

**INSTRUCTIONS TO CANDIDATES:**

- This paper consists of two sections.
- A and B. It has six **examination** items.
- Sections A has two compulsory items.
- Section B has two parts I and II, answer one items from each part.
- Answer four **examination** items in all.
- You may use diagrams where applicable to illustrate your answers.
- Any additional item(s) answered will not be scored.
- All answers must be written in the answer booklets/sheets provided.

## ITEM. 1.

### SECTION A.

#### MAP SKILLS COMPULSORY.

Due to the increasing value of land in most parts of Uganda, a real estate developer has picked interest in Lukaya area. The land he is interested in is located between grid references 690830 and 770840.

He requested the lands office of Lukaya town council to provide him with the necessary information about the features located in this land in order to know them better.

Though the developer sees great potential in the areas resources residential are ignorant about it and therefore invited a meeting to be helped to understand the issues over their areas' resources;

Support material.

Map extract of Lukaya East Africa 1: 50,000 (UGANDA)

Sheet 79/2, series Y732, Edition 3 – U.S.D.

#### Task:

- a) Use an illustration to show the features that will be accommodated in the land of the developer's interest.
- b) Write an advice note not exceeding 250 words showing residents the potential of resources in the area.

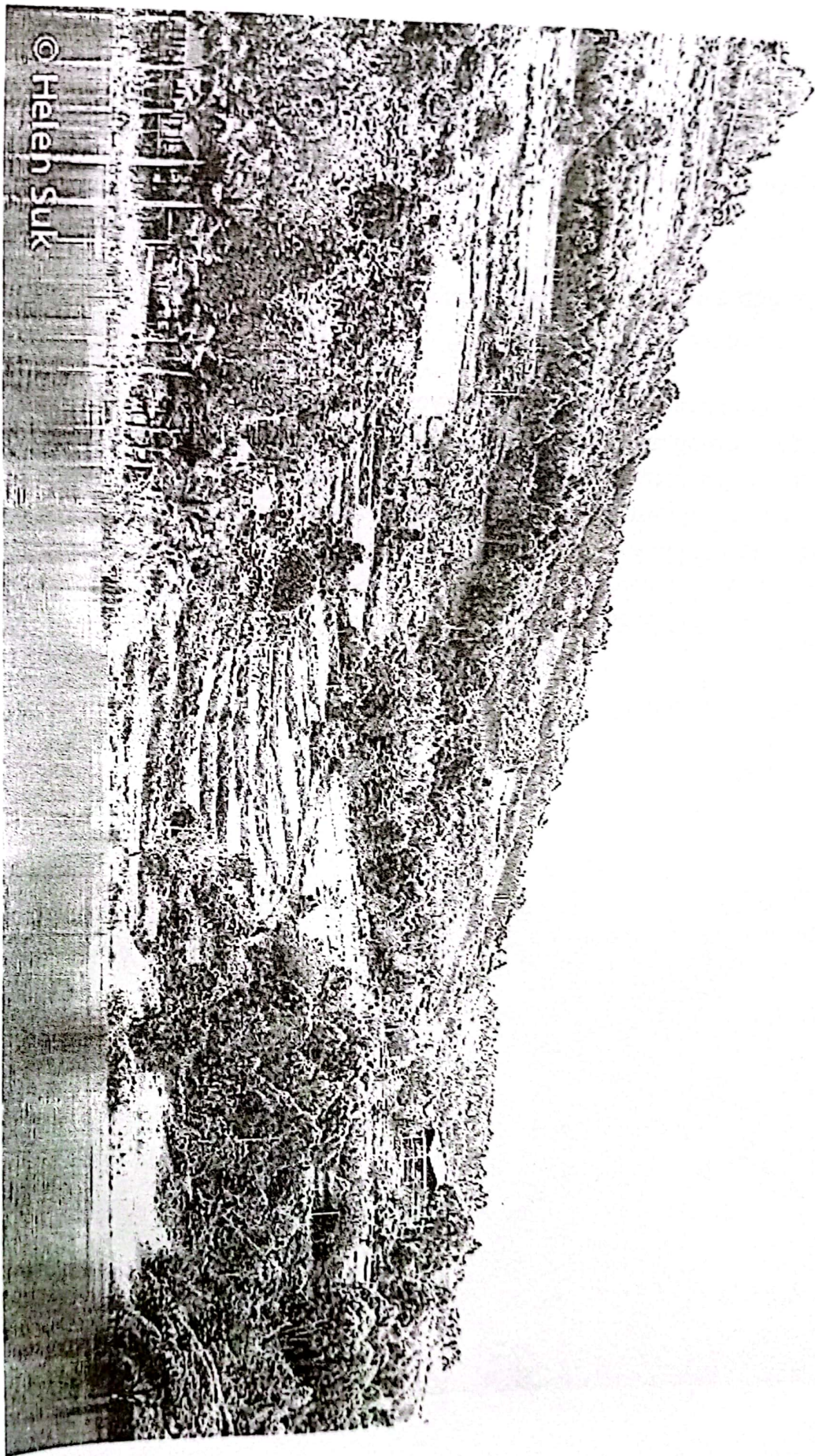
## ITEM 2

### PHOTOGRAPH SKILLS.

Study the photograph and the text provided and respond to the tasks that follow.

The East African region has variety of vegetation, climate, beautiful landscape and wide range of wildlife which form the basis for the promotion of the tourism sector.

Though faced with many challenges ranging from poaching wild animals to bush fires the sector continues to attract support from the respective governments in the region, citizens don't know why this is happening. At a regional schools' seminar, which you are expected to be part, share your reasons for this with:



© Helen Suk

**Task:**

- a) An illustration to show key features of tourism potential in the photograph.  
Each not exceeding 400 words about the governments' decision.

## SECTION B.

This section has two parts I and II

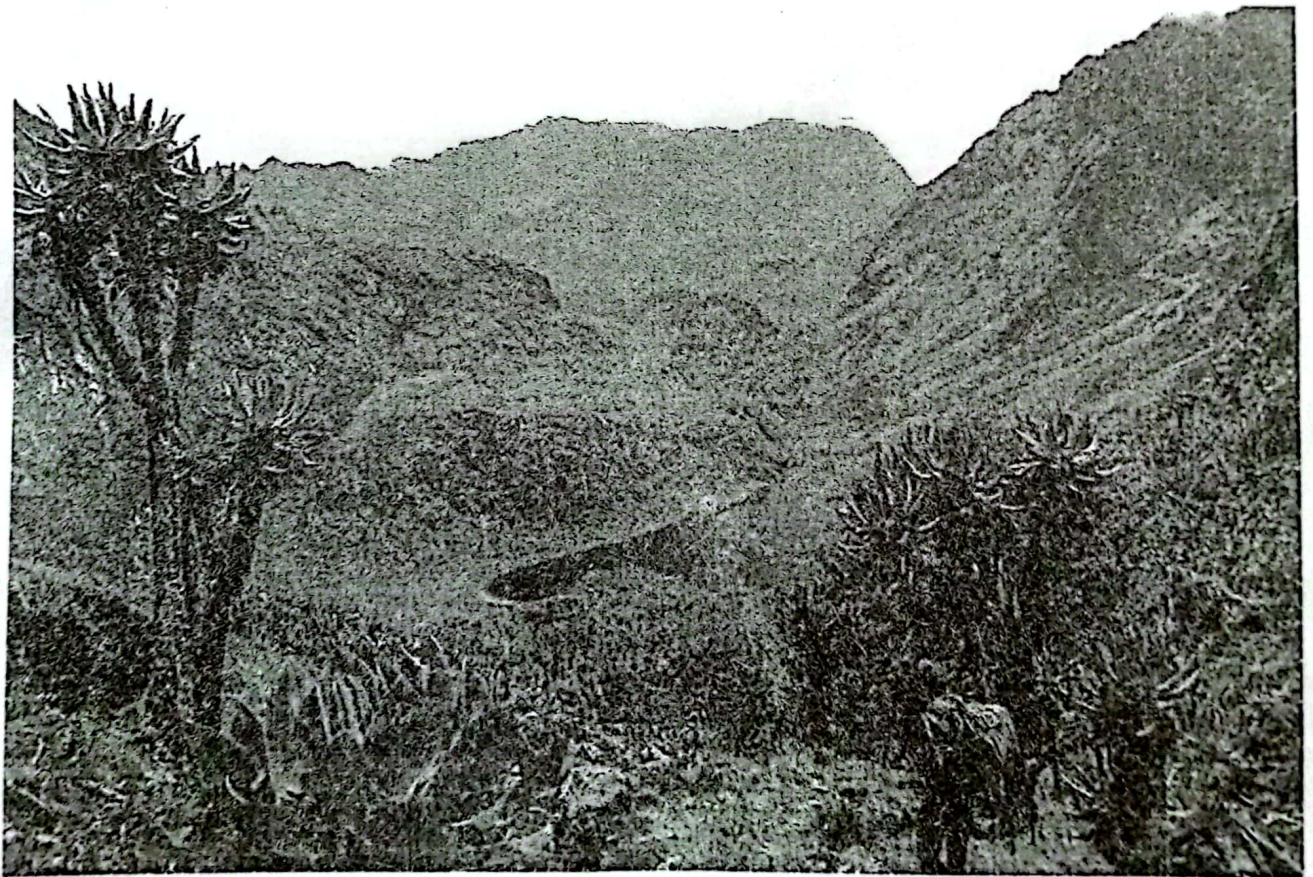
### PART I

Answer one item from this part.

#### Item 3.

John has lived in Rwenzori Mountains for many years. During the wet season landslides and fast flowing rivers displace them but later come back in the dry season where they experience cool conditions. However, this has not stopped him from enjoying this part of East Africa and has a lot of stories about the mountain but fails to explain its origin and uses to the new members of his community. The community leaders who are not different from him have organized a sensitization meeting where you are expected to attend and provide relevant information to them.

Support material photograph of the Rwenzori ranges.



#### Task:

Make a write up not exceeding 300 words that you are expected to present in that meeting.

#### ITEM 4.

In East Africa rivers play a vital role in the lives of the people for example providing water for domestic use, hydro power generation among others. Despite this, their existence is a threat to human survival and at the same time ways to preserve them is far from being realized by the communities of people living close to them and beyond. A local community has organized an event where they need assistance over these features you are to take part, so;

Support material



#### Task:

Make a write up of not more than 400 words that you will share with the community members.

## PART II

Answer **one** item from this part.

### ITEM 5.

Major cities in East African countries are experiencing over population due to increased employment opportunities, better health facilities among others. This has raised concern among the urban authorities who need to find a way on how to handle the situation before it gets out of hand.

Support material

Urban population living in slum areas in 2001 in East Africa.

Country	Percentage
Uganda	93
Kenya	71
Tanzania	92
Rwanda	88
Burundi	65

#### Task:

- Use a relevant illustration to represent the information given in the table.
- Write an essay of 200 – 300 words advising the city authorities on how to handle the situation.

### ITEM 6.

With her strategic location, the East African region has greater advantages to carry out international trade with the rest of the world well, indeed many trade agreements have been reached upon by the East African governments with international partners with the aim of promoting economic growth. However, traders wonder why with such effort, trade is still not carried out well a trade show is organized locally where you are expected to make a contribution to address the issue,

Support material

Product	Imports	Exports
Foot products	21.6	18.8
Textiles	2.0	0.0
Minerals	11.8	3.6
Manufactured goods	43.4	59.1

**Source:**

**Task:**

- a) Use a relevant illustration to present the information in the table
- b) Present a document not exceeding 400 words containing concerns of traders.

**END**